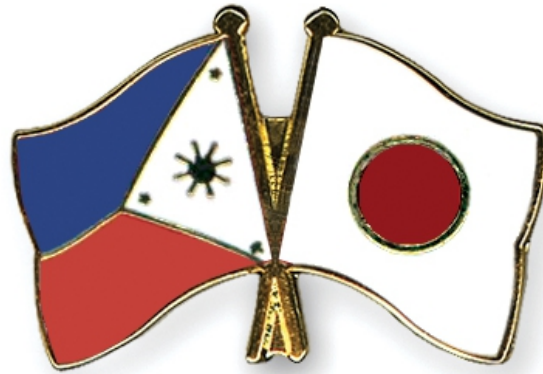


A New Era of Philippines-Japan Relations



Embassy of Japan

March 24, 2017

Strategic Partnership

- **Shared basic values**
Freedom, Democracy, Rule of law, Free and open economy
- **Common goals**
Peace and stability, economic growth in the Asia-Pacific region
- **Long-standing friendship**
60th Anniversary of the establishment of diplomatic relations (2016)



State Visit by their Majesties
the Emperor and Empress



Prime Minister Abe at the residence of President
Duterte during the Summit Meeting in January 2017

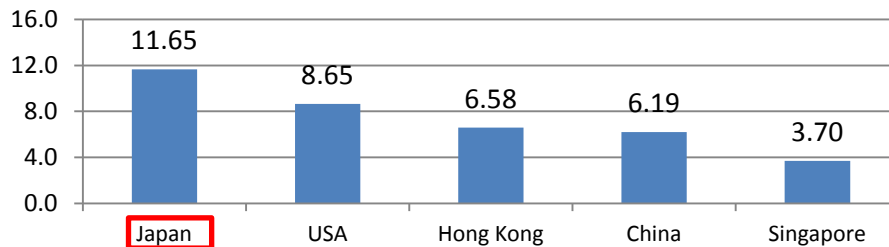
Partnership for Economic Growth ①

➤ Japan: the largest trade partner

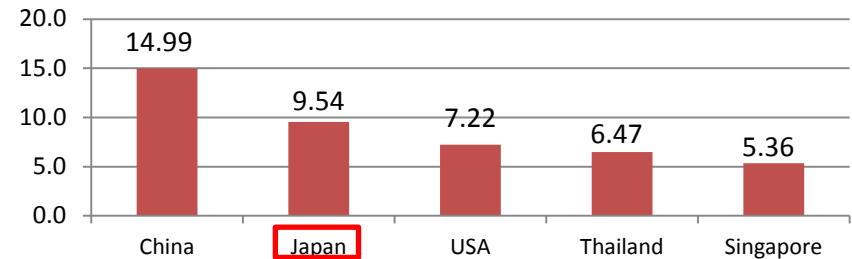
Trade Amount in 2016 (Billion Dollars) :

① Japan 21.19 ② China 21.17 ③ USA 15.86

2016 Philippine Export (Billion USD)



2016 Philippine Import (Billion USD)



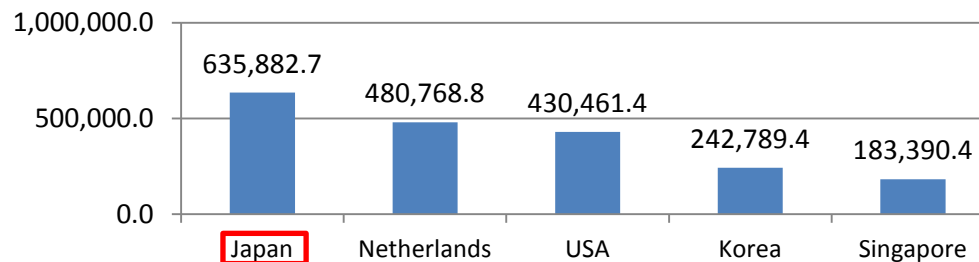
(Source) PSA

➤ Japan : a major source of investment

Cumulative FDI amount from 2000 to 2016 (Million Pesos):

① Japan 635,882.7 ② Netherlands 480,768.8 ③ USA 430,461.4

Foreign Direct Investments to the Philippines (2000—2016 cumulative)

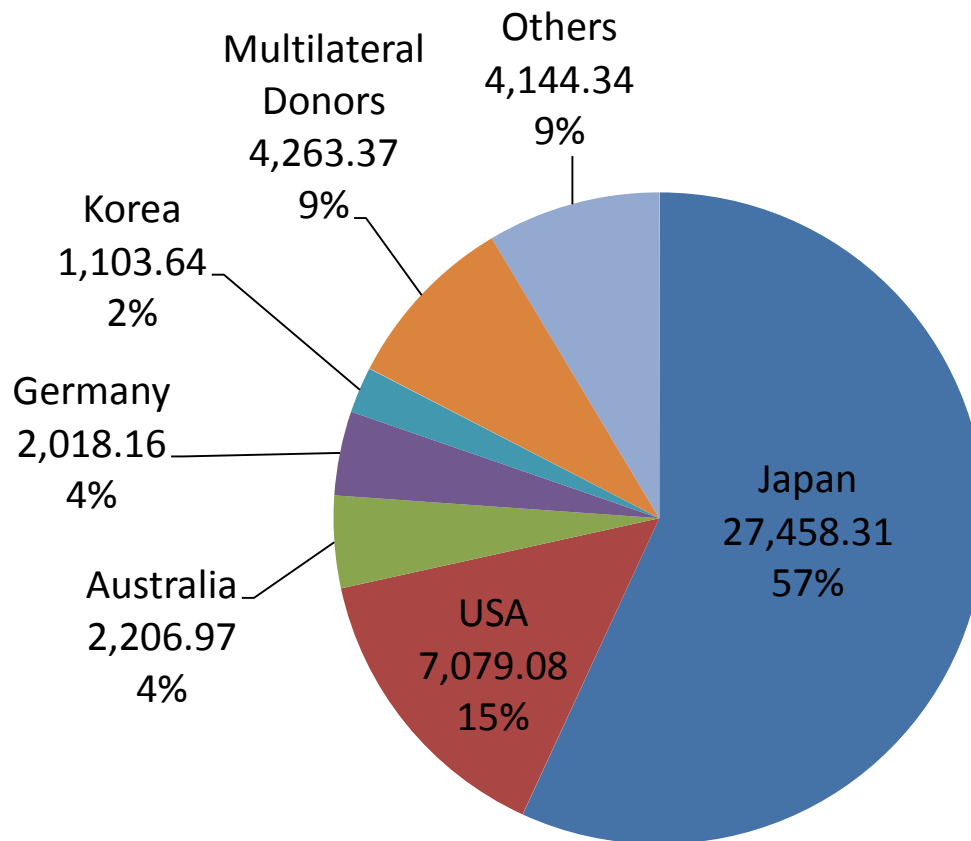


(Source) PSA

Partnership for Economic Growth ②

- Japan is **the largest donor** of ODA to PH

1966-2015 ODA Total Commitments to PH
(Million USD)



(Source) OECD-DAC

Partnership for Economic Growth ③

➤ Japan's assistance to PH: **Three Priority Areas**

(1) Sustainable Economic Growth

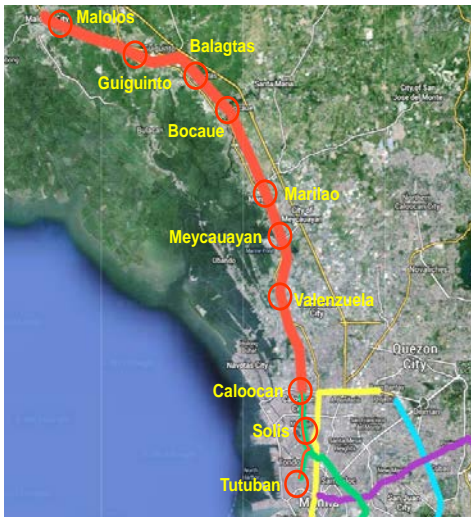
- Infrastructure
- Maritime Safety
- Human Resource Development

(2) Overcoming Vulnerability

- Disaster Prevention
- Health
- Poverty Eradication

(3) Peace and Development in Mindanao (since 2006)

- "J-BIRD" Initiative
126 projects, US\$ 261M
(as of Mar 2016)



North-South Commuter Railway (Malolos-Tutuban)



Ormoc Flood Mitigation Project



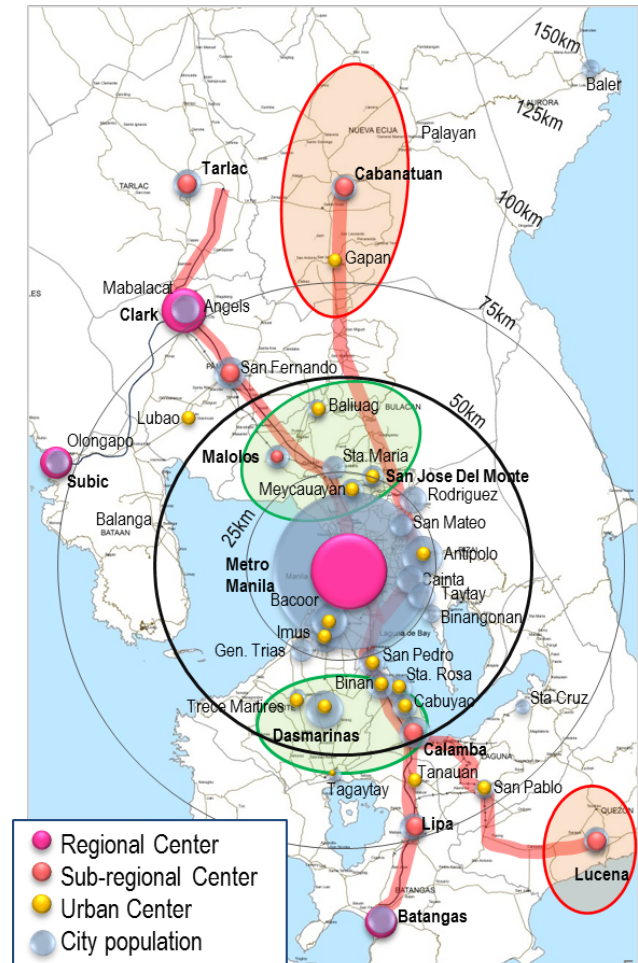
Project for Capacity Building for Community Development in Conflict-Affected Areas

Transport Roadmap for Metro Manila

- ▶ JICA has assisted in developing “Roadmap for Transport Infrastructure Development for Metro Manila and Its Surrounding Areas” in 2014.
- ▶ JICA will review the Roadmap.



Development of Clark Airport & Development of New NAIA



“Polycentric” concept

North-South Commuter Railway Project

▶ JICA is conducting Detailed Design.

To Clark Green City

*JOIN is conducting F/S

Malolos

**North-South Commuter
Railway Project
(Malolos - Tutuban)
【Approx. 38km】**

Tutuban



Tutuban Station (Image)

Japan's ODA Loan
JPY 242 Bil. (≒USD 2.12 Bil.)

E/N signed on Nov. 2015

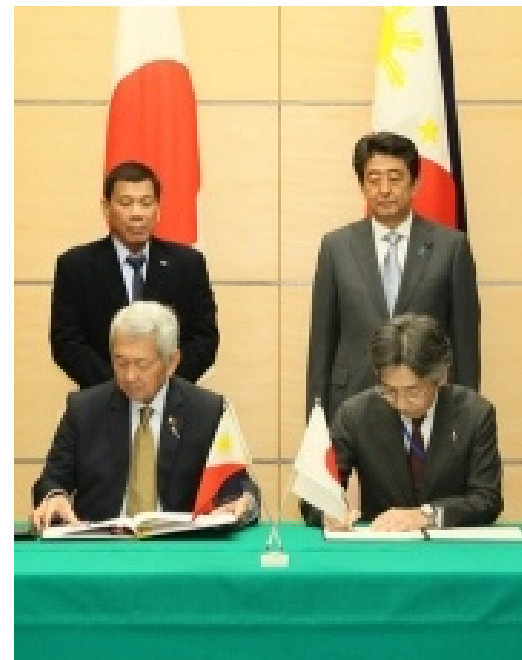
Mega Manila Subway Project

- ▶ Pre-Feasibility Study (Information Collection Survey)
: Completed (Oct 2015)
- ▶ JICA is conducting Feasibility Study of Central Zone.



Multi Role Response Vessel for PCG

- ▶ 10 (ten) 44m-class MRRV is providing by Japan's ODA Loan
 - ➔ 3 of 10 have already arrived.
- ▶ 2 (two) more large vessels will be provided.



The Commissioning Ceremony of first MRRV "TUBBATAHA". President Duterte attended.

Both signed and exchanged notes. Two large vessels will be constructed.

- ▶ Japan will provide High-speed boats and other equipment.

Support for Rehabilitation of Illegal Drugs

Comprehensive Support for Rehabilitation

- developing treatment facilities
- formulating treatment programs
- developing human resources
- conducting promotional activities



E/N Signing for
The Programme for
Consolidated Rehabilitation of
Illegal Drug Users (CARE)
(Mar 23)



Visit of Sec. Ubial from DOH and
other senior officials to Japan
(Feb 26- Mar 3)

Active Exchange of People

➤ Filipino Nurse and Caregiver to Japan under JPEPA (2009-2016)

Total	Nurse	Caregiver
Success / Candidates	Success / Candidates	Success / Candidates
249 / 1,633	77 / 472	172 / 1,161

* The passing rates of national exam in FY2015 were 11.5% (Nurse) and 43.0% (Caregiver).

➤ Technical Intern Training Program

	China	Vietnam	Philippines	Indonesia	Thailand
No. of trainees in JP	89,086	57,581	17,740	15,307	6,084
Component ratio	46.2%	29.9%	9.2%	7.9%	3.2%

(as of Dec 2015)

➤ Housekeeping Services by Foreigners

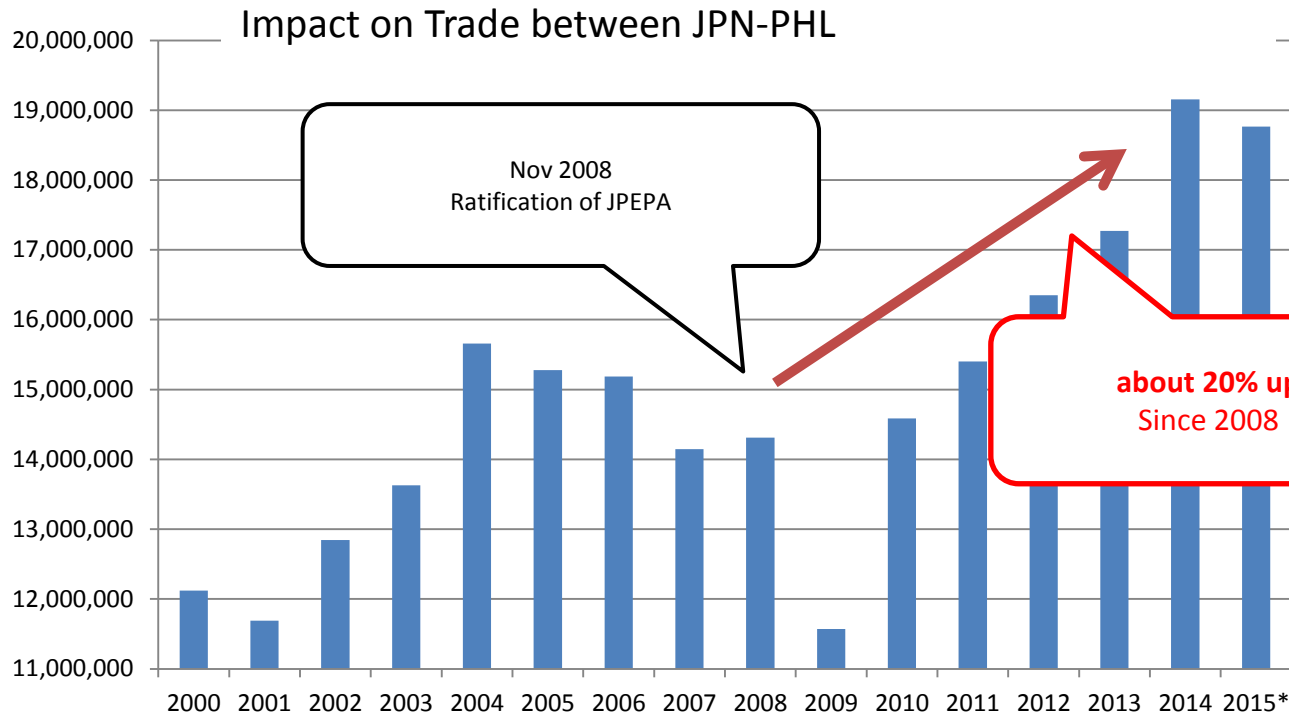
- The service has started in Kanagawa Prefecture. Other National Strategic Special Zones such as Osaka city and Tokyo will follow.

➤ Japan Exchange and Teaching (JET) Program

- Started to accept Filipino under JET Program in 2014 (2 in 2014, 9 in 2015, 28 in 2016)

Economic Partnership Agreement

- JPEPA Japan-Philippines Economic Partnership Agreement (ratified in 2008) goods, investment, intellectual property, acceptance of Filipino nurse & caregiver

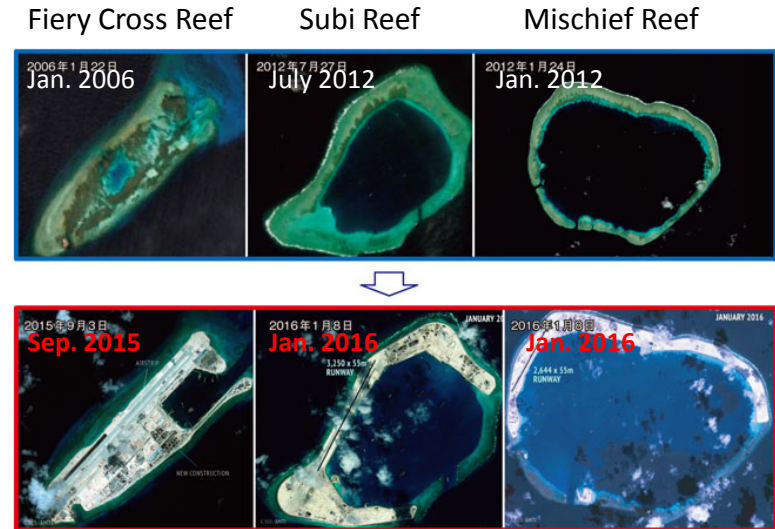


(in thousand USD)

Source: Philippine Statistics Authority

Japan's Position on the South China Sea Issue

- ▶ The South China Sea (SCS) issue is directly connected to the peace and stability in the region.
- ▶ Japan is seriously concerned about the present conditions in the South China Sea.



(Japan's Diplomatic Bluebook 2016)

- ▶ The Tribunal's Award is final and is legally binding on the parties to the dispute. Japan strongly expects that the parties' compliance with this award will lead to the peaceful settlement of disputes in the SCS.